

PIPING & EQUIPMENT PLAN

DESIGN DATA

CONTINUOUS CAPACITY 8625 LBS/HR. FROM/AT 212 °F
 DESIGN PRESSURE 150 PSIG
 OPERATING PRESSURE 5-140 PSIG
 FEEDWATER TEMPERATURE 190° F
 HEATING SURFACE 1000 FT2 (ASME)

FULE REQUIREMENTS:

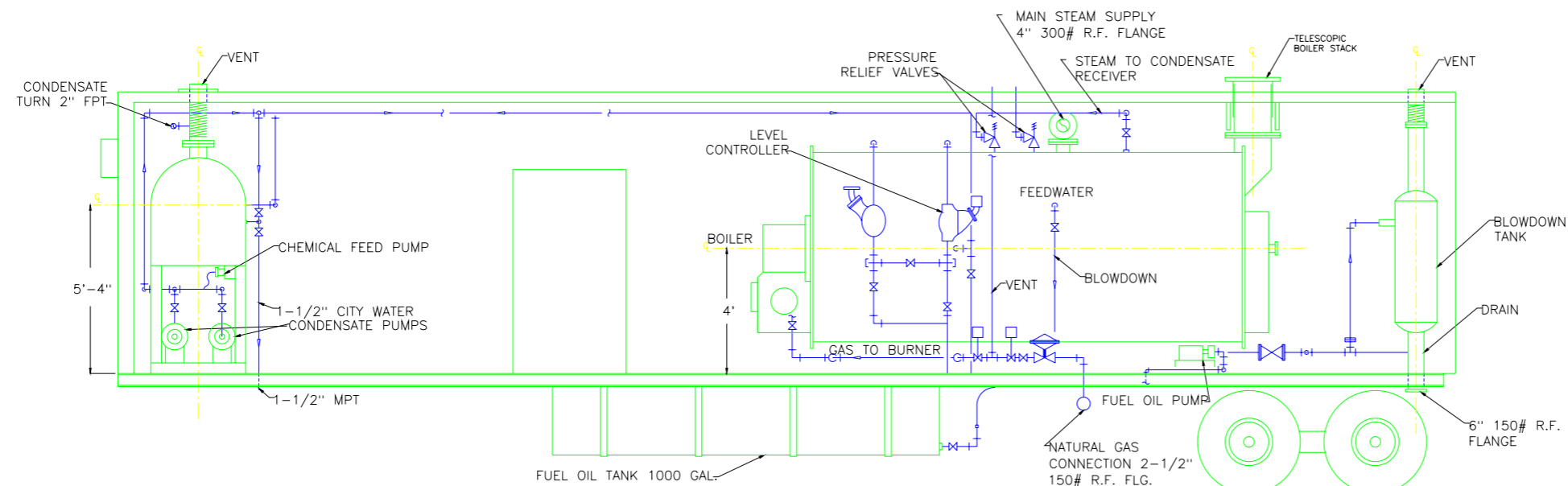
NATURAL GAS- SUPPLY PRESSURE 1 PSIG MAX. REGULATED
 CONSUMPTION 10468 SCFH
 NO.2 FUEL OIL 75 GPH

POWER REQUIREMENTS

240/480 VOLT 3 PHRASE 120/60 AMPS

SHIPPING WEIGHT
 42000 LBS. APPROX.

INSTALLATION:
 OUTDOOR SERVICE



PIPING EQUIPMENT ELEVATION

| | | | | | |
|-------------|------------|--------------------|---|---------|-------|
| Designed by | Checked by | Approved by - date | filename | Date | Scale |
| | | | 00000000 | 05/2002 | N/A |
| | | | 250 H.P. TRAILER-MOUNTED BOILER SYSTEM-PIPING EQUIPMENT ARRANGEMENT | | |
| 250-150-M6 | | | Edition | Sheet | |