

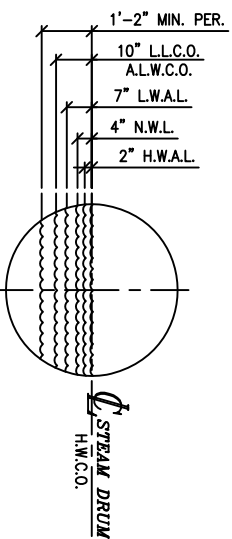
CONNECTIONS

MARK	DESCRIPTION	QTY.	SIZE	TYPE
A	STEAM OUTLET	1	8"	600# R.F.L.W.N.
B	SAFETY RELIEF VALVE	1	1 1/2"	600# R.F.L.W.N.
C	SAFETY RELIEF VALVE	1	1 1/4"	600# R.F.L.W.N.
D	FEEDWATER INLET	1	3"	600# R.F.W.N.
E	INTERMITTENT BLOWOFF	1	1 1/2"	600# R.F.S.W.
F	CHEMICAL FEED	1	1"	600# R.F.S.W.
G	BOILER VENT	1	1"	600# R.F.S.W.
H	WATER COLUMN	2	1 1/2"	SCH 80 PIPE
J	DRUM LEVEL TRANSMITTER	2	1 1/2"	SCH. 80 PIPE
K	AUX. LOW WATER CUT-OFF	1	1"	SCH. 80 PIPE
L	CONTINUOUS BLOWDOWN	1	1"	SCH 80 PIPE
M	WATER DRUM HEATER COIL (NOT REQUIRED)			
N	TEMPERATURE AND PRESSURE CONNECTIONS	4	1"	N.P.T.
P	FURNACE PRESSURE	1	1"	N.P.T.
R	SUPER HEATER STEAM INLET	1	8"	600# R.F.W.N.
S	SUPER HEATER STEAM OUTLET	1	8"	600# R.F.W.N.
T	SUPER HEATER HEADER DRAIN CONNECTION	2	1"	SCH. 80 PIPE
U	THERMAL COUPLE CONN	1	3/4"	N.P.T.

CUSTOMER'S NAME: V.E.O. STOCK UNIT
 CUSTOMER'S P.O. NO.:
 CUSTOMER'S JOB NO.: VSM-75-84-SH
 BOILER ITEM: 150,000
 SHIPPING WEIGHT: 150,000
 DESTINATION: RENTAL
 NUMBER REQUIRED: 1

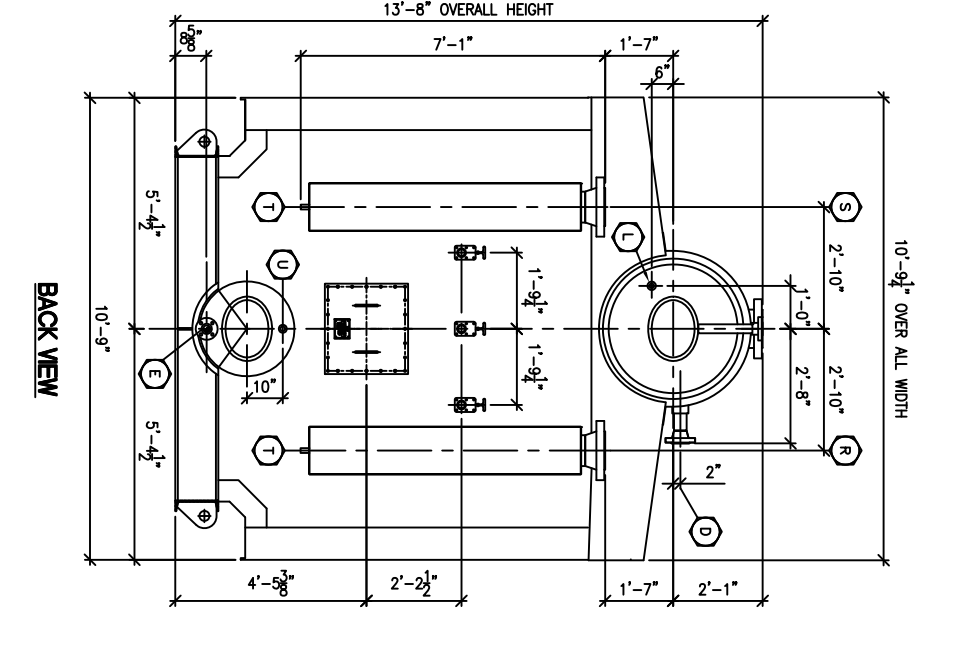
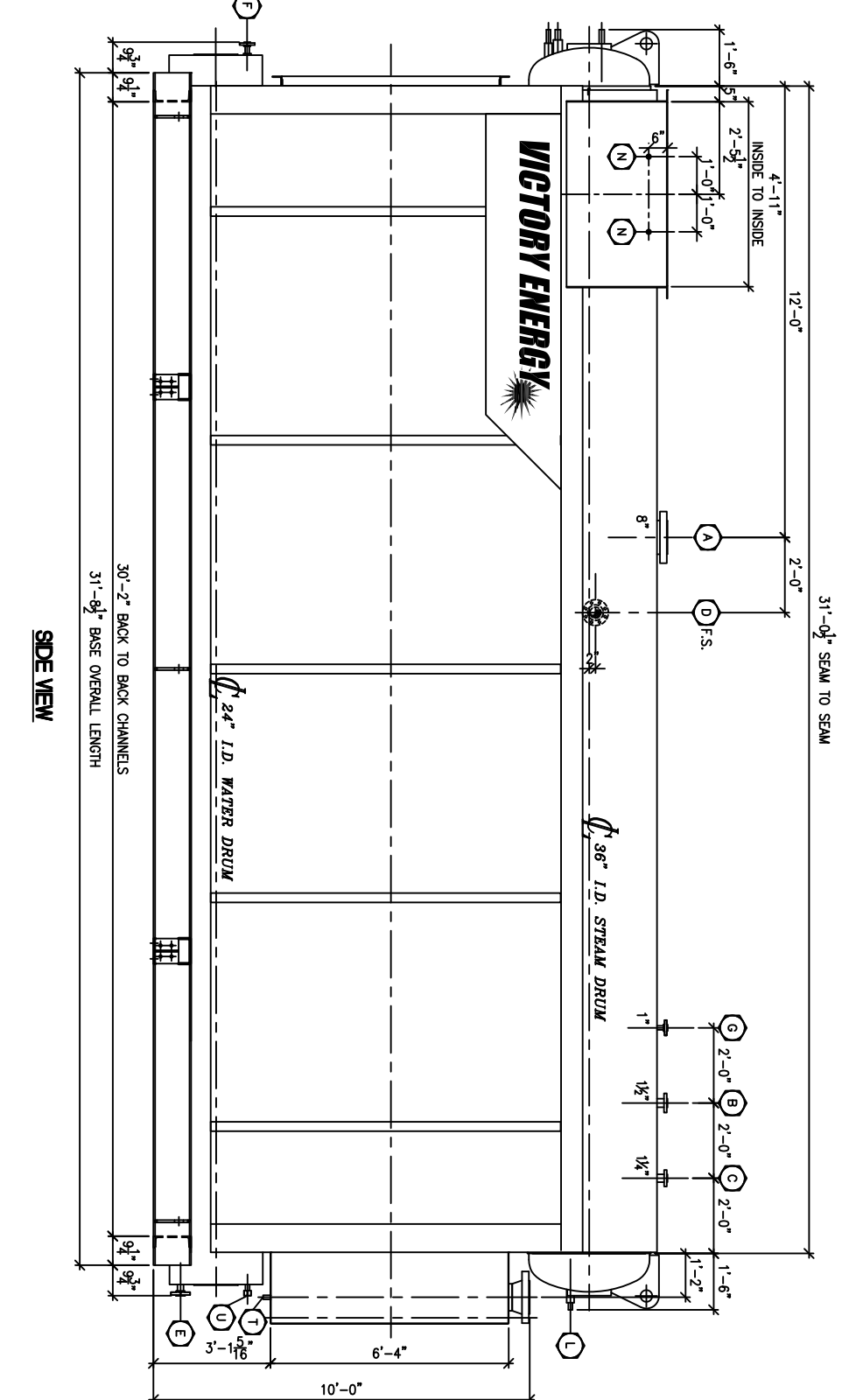
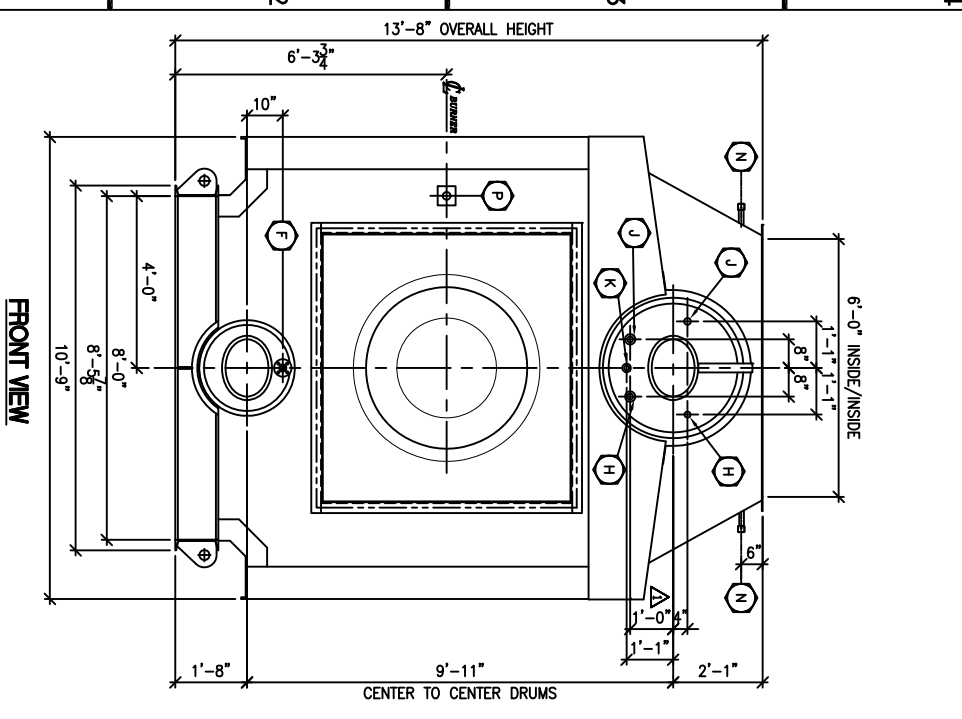
NOTE:
 ALL MATERIAL AND FABRICATION TO BE PER A.S.M.E. CODE SECTION I 2007 EDITION 2009 ADDENDA.

ONE SHOP ASSEMBLED VOYAGER STEAM GENERATOR
 BOILER HEATING SURFACE: TOTAL 7,380 FT²
 RADIANT 6,896 FT²
 SUPER HEATER HEATING SURFACE: 420 FT²
 DESIGN PRESSURE: 750 PSIG @ 600°F
 OPERATING PRESSURE: 714 PSIG
 SHELL & HEAD CORROSION ALLOWANCE: 0.000"
 CAPACITY: 75,000 #/HR
 STEAM PURITY: 0.5% MOISTURE
 BLOWDOWN: 1%
 FEEDWATER TEMPERATURE: 227°F
 FUELS: MAIN : NATURAL GAS
 WATER CAPACITY: BOILER FLOODED 4,300 GALS
 INSTALLATION: RENTAL



WATER LEVEL SWITCH SETTINGS

ALL EXPOSED CARBON STEEL SURFACES OF THE BOILER AND CASING EXCEPT FOR THE FUE GAS OUTLET FLANGE, DRUM HEAD COVERS AND PIPING.
 SURFACE PREPARATION: SSPC-SP3
 PRIMER COAT: APPLY 2 TO 3 MILS DFT OF CARBOCOAT 150 0700 GRAY
 FINISH COAT: APPLY 1.5 TO 2 MILS DFT OF CARBOCOAT 8812 1135 DURING WARM WEATHER (MAXIMUM 95°F @ 80% HUMIDITY) AND CARBOTHANE 8815 1135 IN THE COLD WEATHER (MINIMUM 35°F @ 10% HUMIDITY).
 TOTAL MILS DFT: 3 1/2 to 5
 DRUM HEAD COVERS & FUE GAS OUTLET FLANGE:
 SURFACE PREPARATION: SSPC-SP3
 PRIMER/FINISH COAT: CARBOCOAT 150 0700 GRAY
 TOTAL MILS DFT: 2 to 3
 PIPING COMPONENTS:
 SURFACE PREPARATION: SSPC-SP3
 PRIMER/FINISH: H.I.S. HI TEMP GRAY 90C07
 TOTAL MILS DFT: 2 to 3
 VALVE & VALVE HANDLES:
 SURFACE PREPARATION: SSPC-SP3
 PRIMER COAT: CARBOCOAT 150 0700 GRAY
 FINISH COAT: CARBOTHANE 8815 1135 YEAR AROUND.
 TOTAL MILS DFT: 2 to 3
 HOT DUCTING (>200°F):
 SURFACE PREPARATION: SSPC-SP3
 PRIMER/FINISH: H.I.S. HI TEMP GRAY 90C07
 TOTAL MILS DFT: 2 to 3
 SUPPORT STRUCTURES, LADDERS, PLATFORMS, AND HANDRAILS: HOT DIPPED GALVANIZED



THIS DESIGN OR DRAWING IS NOT SOLD AND IS SUBJECT TO RECALL. REPRODUCTION OR DRAWING RIGHTS ARE RESERVED SOLELY TO VICTORY ENERGY OPERATIONS, DESSCO. THE DRAWING HAS BEEN DELIVERED AND RECEIVED IN THE ADDRESS AND BEING THE VISION AND DESIGN OF VICTORY OPERATIONS, L.L.C. ANY CHANGES TO THIS DRAWING SHALL BE MADE IMMEDIATELY UPON HAND AND THAT ANY INFORMATION DISCLOSED BY THIS DRAWING TO THE HOLDER SHALL BE HELD IN CONFIDENCE.

rev.	by	date	chk'd	date	description
6					
5					
4					
3					
2					
1	RDR	12-1-10	JP	12-1-10	CHANGED LOCATION OF LOWER CONNECTIONS J & H

VICTORY ENERGY
 10701 E. 128th St. North, Collinsville, OK 74021
 PH: 918-274-0028 FAX: 918-274-0059

cust./proj. #: VSM-75-84-SH / V.E.O. STOCK
 title: BOILER GENERAL ARRANGEMENT
 by: RDR chkd. JP dwn. NONE
 date: 8/2/10 date: 8/1/10 scale: NONE dwg. no.: 00-737-00 rev.: 1